



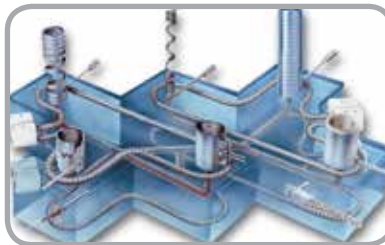
Thermon
South Africa (Pty) Ltd.

Flexible Rod Heaters

HotFlex

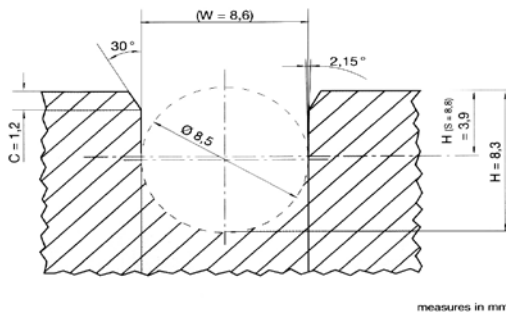


Hotset offers a flexible heater that can be bent into very specific shapes without the need for special bending jigs. Due to the flexibility of the HotFlex it is now possible to bend it into three dimensional shapes.



HotFlex has been designed for concentrated heat in specific areas to optimise the heating systems. It is extensively used for heating the plastic flow channels on hot runner manifolds and to focus heat in the specific area on the sealing plates used for bonding and cutting plastic.

Technical data



Hotflex Ø 8.5

termination M2.5



ceramic connector



UHSA-YCERCONNEC

Diameter options: 8.5 ± 0.1mm, standard
8.0 ± 0.1mm
8.2 ± 0.1mm
6.5 ± 0.1mm

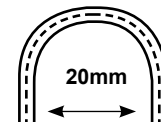
Extension factor:
multiply the groove centreline length of each bend by these expansion factors to determine the appropriate HotFlex length:

Hotflex Ø 8.5 mm:
at radius R 10.0mm = 0.94
at radius R 12.5mm = 0.95
at radius R 15.0mm = 0.95
at radius R >15.0mm = 0.96

Unheated zones: min. 30mm / 30mm

Not bendable zones: min. 30mm / 30mm

Minimum bending radius: R = 10mm (internal)

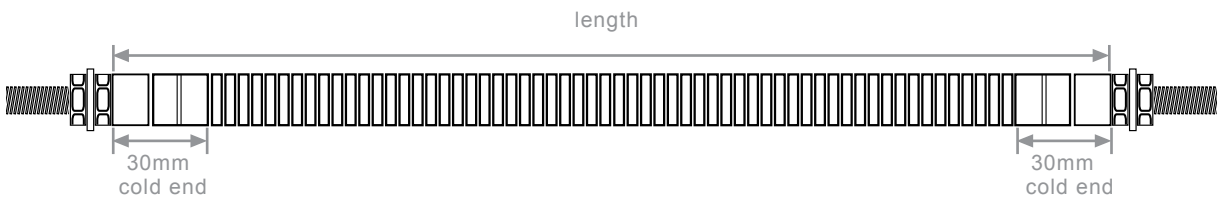


other dimensions and product varieties on request



Hotflex elements

HOTFLEX 8.5mm



The diagram shows a long, thin cylindrical element with a series of longitudinal ridges. It is labeled 'HOTFLEX 8.5mm' and 'length'. At each end, there is a section labeled '30mm cold end'.

stock code	diameter x length (mm)	wattage at 230V	sheath
UHSA--0650-085-	8.5 x 300	650	stainless steel
UHSA--0750-085-	8.5 x 350	750	stainless steel
UHSA--0900-085-	8.5 x 400	900	stainless steel
UHSA--1050-085-	8.5 x 450	1050	stainless steel
UHSA--0700-085L	8.5 x 500	700	stainless steel
UHSA--0780-085L	8.5 x 550	780	stainless steel
UHSA--0860-085L	8.5 x 600	860	stainless steel
UHSA--0950-085-L	8.5 x 650	950	stainless steel
UHSA--1000-085L	8.5 x 700	1000	stainless steel
UHSA--1100-085L	8.5 x 750	1100	stainless steel
UHSA--1190-085L	8.5 x 800	1190	stainless steel
UHSA--1250-085L	8.5 x 850	1250	stainless steel
UHSA--1350-085L	8.5 x 900	1350	stainless steel
UHSA--1430-085L	8.5 x 950	1430	stainless steel
UHSA--1500-085L	8.5 x 1000	1500	stainless steel
UHSA--1590-085L	8.5 x 1050	1590	stainless steel
UHSA--1650-085L	8.5 x 1100	1650	stainless steel
UHSA--1750-085L	8.5 x 1150	1750	stainless steel
UHSA--1839-085L	8.5 x 1200	1830	stainless steel
UHSA--1900-085L	8.5 x 1250	1900	stainless steel
UHSA--1990-085L	8.5 x 1300	1990	stainless steel
UHSA--2070-085L	8.5 x 1350	2020	stainless steel
UHSA--2150-085L	8.5 x 1400	2150	stainless steel
UHSA--2230-085L	8.5 x 1450	2230	stainless steel
UHSA--2300-085L	8.5 x 1500	2300	stainless steel
UHSA-YCERCONNEC	Ceramic connector block for hotflex		

-L generally ex stock



NB: Care should be taken when choosing the length of the HotFlex element.

- The element should not protrude out of the groove by more than 20mm on either side.
- Exposure of the heated length (ending 30mm from each end) will cause overheating and failure of the element.
- During bending the element will expand by typically 3% (dependent on shape. See extension factors under technical data)
- The groove should be machined deep enough and not be more than 0.1mm oversize.
- The element must be inserted firmly into the groove, avoiding air gaps which will lead to hot spots and possible failure.

Thermon SA reserves the right to make any kind of design or functional modification without prior notice.

